

off 0.567

11/00



module H architecture sa
architectes hes sia uts
route de ferreyres 10 a
1315 la sarraz t. 021 821 40 80
www.module-h.ch

2 logements dans un rural

Ch. du Café Savoyard, 1174 Pizy, parc. 2168

transformation intérieur et extérieur

Maître d'Ouvrage : promis-vendu à FAVRE Sandra & Dominique
La Grangette, Rte du Signal 4
1174 Pizy

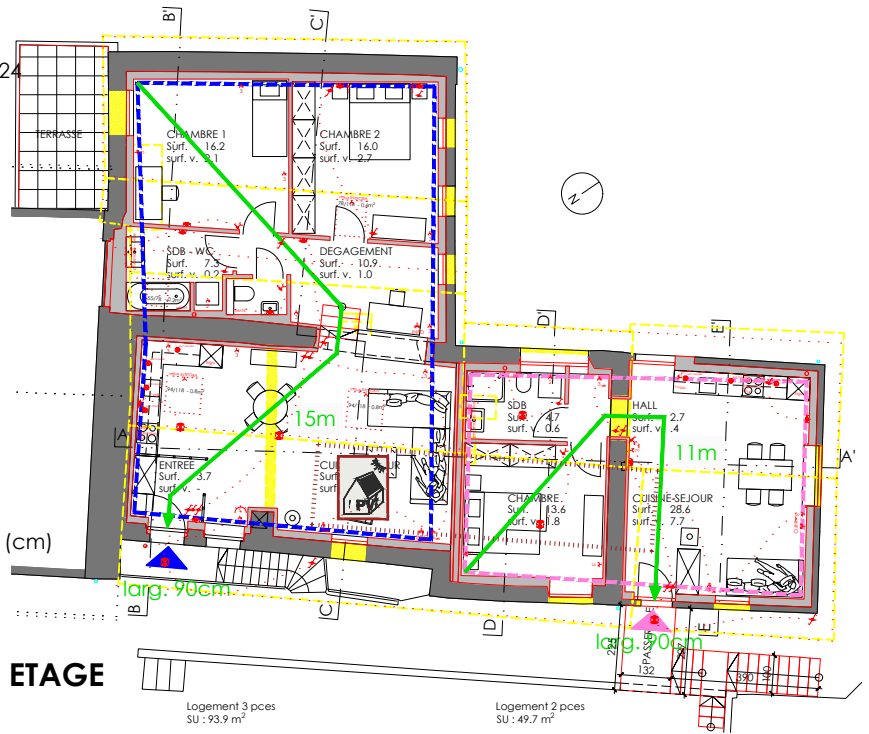
LISTE DES MODIF.

01	06
02	07
03	08
04	09
05	10

PHASE ENQUETE 11.06.2024

Plan protection incendie

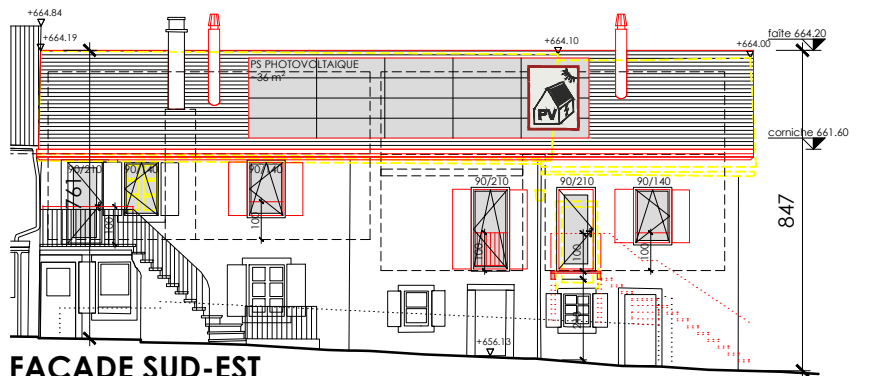
ECH 1:200



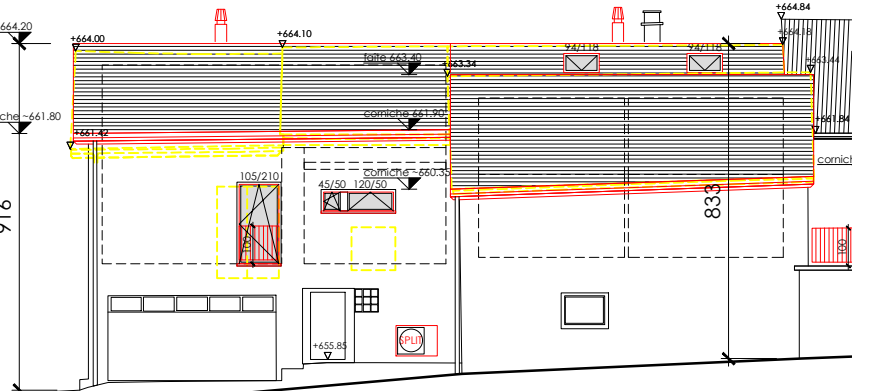
ETAGE

Logement 3 pces
SU : 93.9 m²

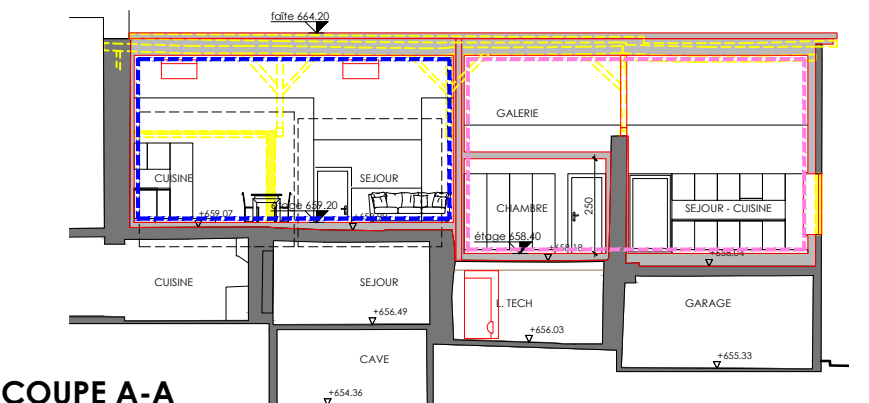
Logement 2 pces
SU : 49.7 m²



FACADE SUD-EST

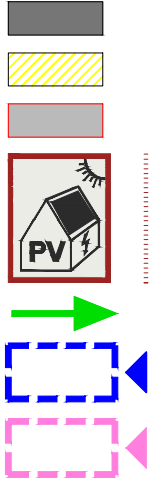


FACADE NORD-OUEST



COUPE A-A

LEGENDE :



ETAT EXISTANT

A DEMOLIR

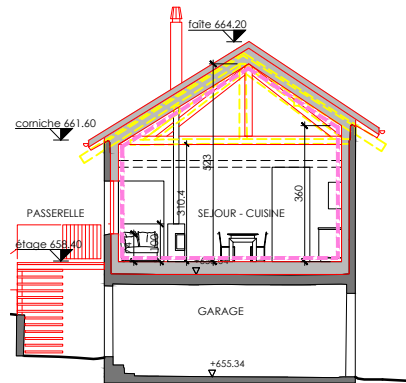
A CONSTRUIRE

INSTALLATION PHOTOVOLTAIQUE:
surface 36 m²

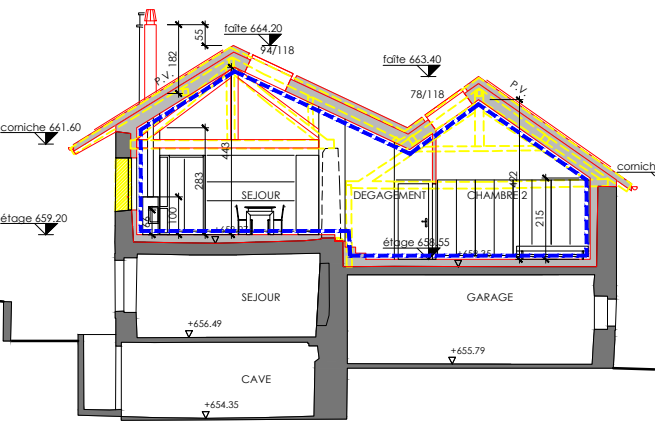
VOIES DE FUITE (m) et LARGEUR PORTE (cm)

ETAGE 3 PCES
SUP: 93.9 m²

ETAGE 2 PCES
SUP: 49.7 m²



COUPE E-E



COUPE C-C